

# Big Creek II Short Plat



POND



PUMP HOUSE



BURIED LINE  
(VARIES 2" - 3/4" PIPE)

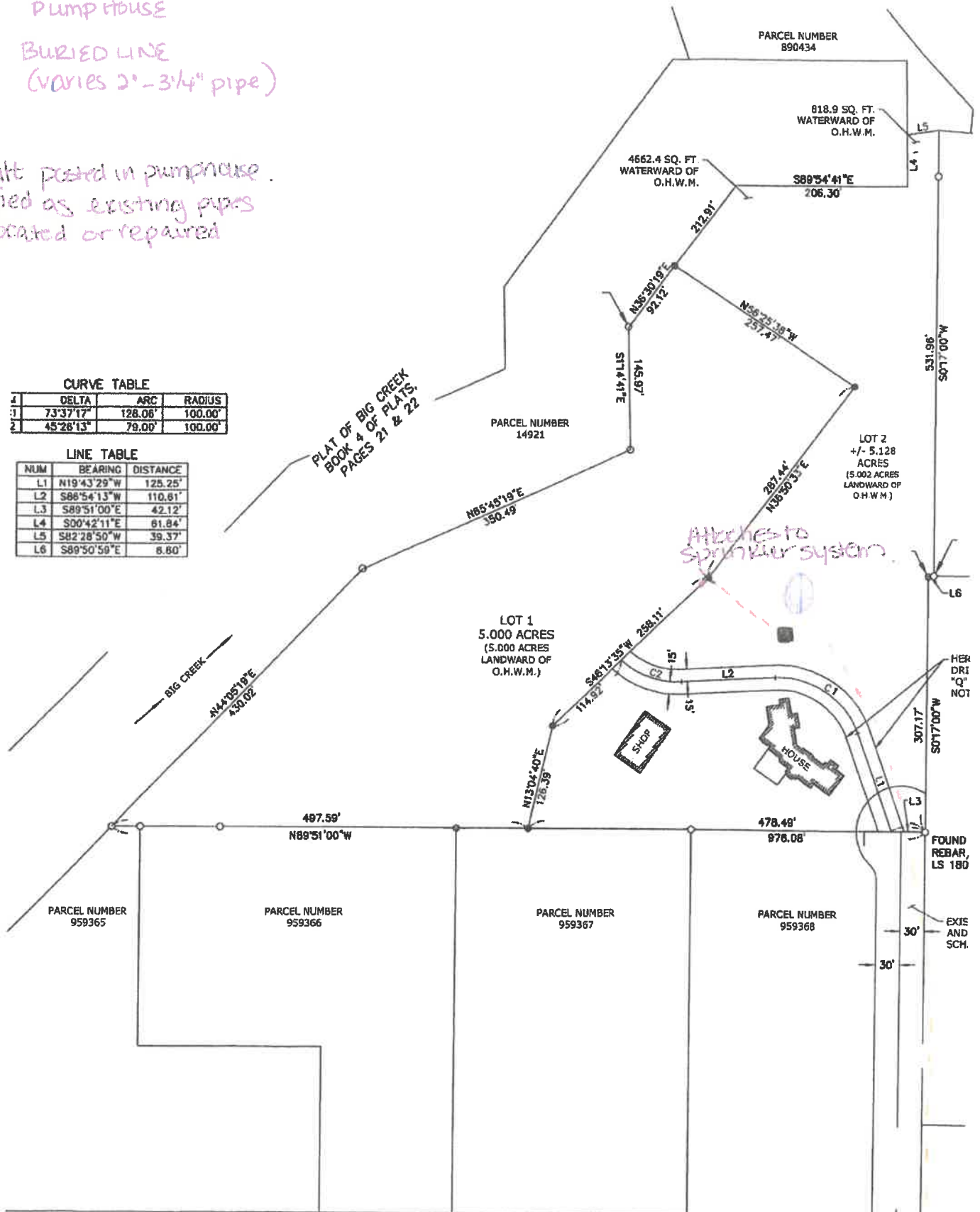
\* As built posted in pump house.  
Modified as existing pipes  
are located or repaired

**CURVE TABLE**

Δ	DELTA	ARC	RADIUS
1	73°37'17"	128.06'	100.00'
2	45°28'13"	79.00'	100.00'

**LINE TABLE**

NUM	BEARING	DISTANCE
L1	N19°43'29"W	125.25'
L2	S88°54'13"W	110.61'
L3	S89°51'00"E	42.12'
L4	S00°42'11"E	61.84'
L5	S82°28'50"W	39.37'
L6	S89°50'59"E	6.80'



There is a 10" pipe (above ground) that connects and runs from north side of Nelson siding.

T/b M 4.9 - 2.4W - South side of Nelson siding.